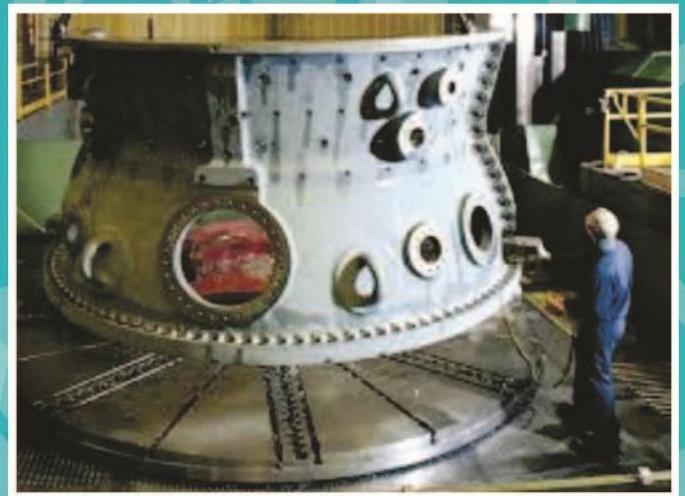
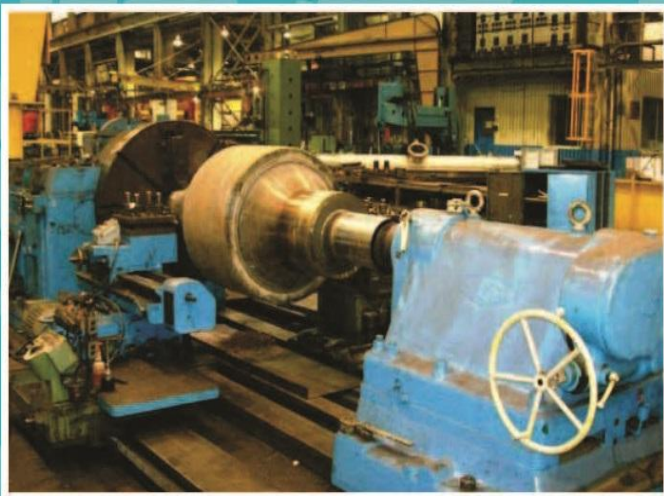
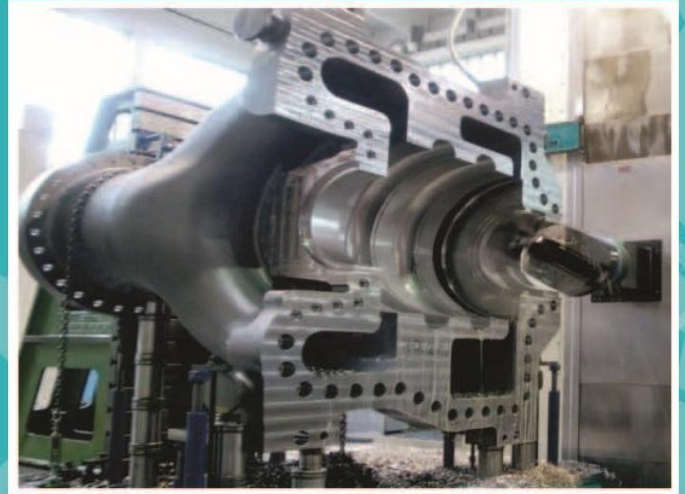




KSV ENGINEERING SERVICES (INDIA) Pvt. Ltd.



KSV Engineering Service India Pvt. Ltd. (Based at Hyderabad) is unique in Indian sub-continent for its ability to provide turnkey solutions for Power Plants and Process industries (Cement, Iron, Sugar, Fertilizers, Paper, Refineries, Chemical & Pharmaceutical Manufacturing facilities) that utilize heavy engineering equipment. Services include - in-house Manufacturing of Spares, Repairs & Retrofits, O&M contracts, Re-Engineering etc.

We at 'KSVE' are qualitative and economical alternative to different OEMs in the above areas, providing 100% import substitution for our valued customers through utilizing state of the art manufacturing facility.

Technical Strength :

KSVE has Experienced Engineers/Experts, Technicians in various disciplines (Design/Manufacturing, Testing, Repairs & services) who are well supported by Retired BHEL Subject Matter Experts. Based on customer needs, KSVE provides seamless solutions in the design of rotating equipment utilizing in-house knowledge base along with latest software resources. KSVE implemented continual improvement program where new manufacturing methods are developed for refurbishment of critical components used in rotating and heavy engineering equipment.

At KSVE we strive for exceptional functioning of rotating/heavy engineering equipment in power and process plants utilizing expertise in:

- | Design and engineering | Research and development
- | Manufacture and testing | Installation and service
- | Repairs & Maintenance | Quality assurance

Manufacturing of Precision Spare Parts:

- For - Latest engineering and manufacturing facilities.
 - Restoring the original integrity and operating specifications for Turbo Machinery Spares and Heavy engineering Equipment.
- Customers prefer KSVE as a source of qualitative and economical alternative



Targeted Customers:

- * Power Plants
- * Iron & Steel Plants
- * Sugar Plants
- * Refineries
- * Cement Plants
- * Paper Plants
- * Fertilizer Plants



Our facilities:

Complete Machining Facilities :

- 1). VTL Swing Dia. 5mtrs, Height under Rails: 2.5mtrs, Loading Capacity 70Tons.
- 2). Floor borings Spindle Dia. 225, X axis 9mtrs, Y axis 4.5mtrs.
- 3). Heavy Duty Lathe Swing Dia. on Slide 3.1mtrs, Turning Length 10mtrs, Loading Capacity 60Tons.
- 4). Lathe Swing Dia. 500, Turning Length 2.0mtrs.
- 5). Lathe Turning Dia. 400mm, Turning Length 1.5mtrs.
- 6). Milling Machine X1000mm, Y500mm, Z500mm.
- 7). Radial Drilling Machines Arm Length 2mtrs, Drilling Capacity of 100mm.
- 8). Welding Rectifiers & Gas Cutters.
- 9). 166KVA Diesel Generator.
- 10). 60Ton Capacity EOT Crane, with External Support up to 110Tons Capacity.

- * Computer Aided Design/ Reverse engineering
- * Chemical & Mechanical Properties Testing,

- * On Site Material Testing Facilities (Portable Material Identification Machine)
- * Insitu Machining Fixtures / Machines
- * Welding, Machining, and Metallurgical Specialists
- * Professional Engineers in Design, Engineering, Manufacturing and Field Services.
- * NDT - Level II UT, Penetrate, Magnetic Particle
- * TIG, Arc & Gas Welding and Cutting,
- * Inspection of Fixtures and Gauges,
- * Hardness Testing and Microscopic Analysis
- * Dimensional Integrity Inspection
- * Grit blast cleaning using Aluminum oxide and
24 Hours X 7 Days Service.



Fabrication Facilities with Firm Tie UP:

- * Floor Borer's Machine of $\phi 250$ mm of Spindle (Make: Heller) Size: X-9.2 m,Y-4.2 m,Z-1.2 m
- * Rolling Machine : Capacity 3.2 m,Width X 63 mm Thk Plates(Can be Rolled up to 120 mm thick plates for min plates width)
- * Air Plasma cutting up to 50 mm
- * Manual Metal Arc Welding
- * SAW Welding
- * MIG Welding
- * TIG Welding
- * Radial Drilling Machine up to 80 mm diameter
- * Hand Drilling Machine
- * Diesel Generators of 123 KVA.
- * Pedestal & Magnetic Drilling Machines,
- * Magnetic Base Mounted Drilling Machine/Broaching Machine
- * Hydraulic Press (Double Cylinder) Capacity up to 300 Tons
- * Water Testing Facility (For Chlorine Content)
- * Grit Blasting
- * Transport Facility



Quality Assurance:

Quality is viewed as an ongoing process from purchasing including outsourcing, production and service provisions, preservation, control of monitoring and measuring devices, internal audit, control of non-conforming product, continual improvement that shall bring maximum value addition to our offering - Leading to market preference for our product.

Quality Policy:

We shall strive to achieve enhanced customer satisfaction in measurable terms with utmost quality and timely supplies, ensuring more values for money.



After sales care:

Vital part of our operation philosophy focuses on optimum equipment performance with minimum downtime, achieved through being available 24(hours)/7(days a week) and maintaining adequate stock of spares that cater for most common causes leading to equipment breakdowns.

Our trained team of field technicians and engineers are fully equipped to carry out complete package, commissioning, performance monitoring, maintenance, repair of Supplied Equipment as well as those of other manufacturers.

Customer Care team conducts 'on-site' and 'at shop' training programs to meet individual customer needs

OUR PRODUCTS

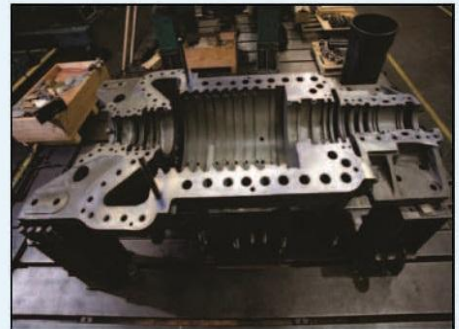
Power Plants : Manufacturing and supply of critical spares for steam turbines, compressors, pumps and generators. Spares include- Turbine Casings, Turbine Rotor Shafts, Thrust and Journal Bearings including 2-Lobe/ 4-Lobe, Tilting Pad, Carriers, Guide Wheels, Diaphragms, Labyrinth Glands and Seals, Turbine Blades and Nozzles, Pump Casings, Pump Shafts, Load Couplings, Canisters, Governing Components, Casing and Pedestal Keys, Brackets, Slip Rings, Impellers, Parting Plane Fasteners etc.

Steel Plants: Steckel Mill Coiler Drums, Gear Box Housings, Kiln Support Roller Assemblies, Chock and Chock Assemblies, Fly Wheel Assemblies, Spindle Couplings

Sugar Industry: Sugar Mill Headstocks, Hub Assemblies, Gear Couplings, Cane Crusher Parts & Roller Crushers.

Cement Industry: Kiln shells, Rotors for Crushers, Roller Presses, Pinion Bearing Housings, Drive Shafts, Cement Mill Connecting Flanges. Repairing/ Servicing of Raw Mill Gear Boxes, VRM Fan Motors, and Impellers etc.

Fertilizers: Dryer Shells, Bearing Housings



VISION: To be a premier global service provider for Turbo Machines & Heavy Engineering Equipment in power and process plants.



KSV ENGINEERING SERVICES (INDIA) Pvt. Ltd.

Plot No: 37/ 3 & 4, Phase-I, IDA, Pashamylaram, Pantancheru, Medak - 502307. Hyderabad.

Phone : +91-9248876388, +91-9949553399, +91-9866512981

www.ksvengg.com | Email: admin@ksvengg.com